

PROVIDENCE ST. MEL SCHOOL

**A TRIBUTE
TO OUR
TEACHERS**



2018 ANNUAL REPORT

**A MESSAGE FROM PAUL J. ADAMS III,
EXECUTIVE CHAIRMAN & FOUNDER,
AND JEANETTE BUTALA, PRESIDENT**



**We are grateful to
those who are the
heartbeat of our school
and our success
—the teachers!**

**A TRIBUTE TO OUR TEACHERS
2018 Annual Report**

***The educators of
Providence St. Mel School
walk alongside our
students everyday,
inspiring them to live up to
their potential and build
upon our legacy of
integrity and academic
excellence.***



Since 1978, the march toward a quality education and a better, brighter, and richer future for all has been the foundation of the mission and vision of Providence St. Mel School. Our tradition of success on Chicago's West Side has been unrivaled, not only locally but nationally. Let us not forget who has been at the forefront of our success – our incredible and tremendous faculty and staff. Our teachers touch the lives of our students daily, and we know their impact can influence the trajectory of a student's life, empowering them to realize that they are capable and committed individuals.

The educators of Providence St. Mel School walk alongside our students everyday—for some, during the most tumultuous moments of their lives—inspiring them to live up to their potential and build upon our legacy of integrity and academic excellence. Each year we are struck by their persistence and courage—it is not hard to recognize that their drive is the heartbeat of the school. Our average faculty tenure of 15 years epitomizes our teachers' steadfast devotion to students who simply need to know that someone believes in them. In fact, half of the entire faculty and staff have been at Providence St. Mel for over 10 years, many for more than 20 years.

Many incoming students at Providence St. Mel previously attended schools that remained complicit in the academic disparities happening throughout the City of Chicago. Our students often enter our school with an academic deficit of two to three grade levels, and our tireless teachers ensure that these students are given the necessary intervention and are prepared for college in just a few short years. This undertaking entails additional hours spent tutoring students after school and on weekends. All of our dedicated faculty go above and beyond—tutoring after school and on Saturdays, organizing extra-curricular activities, and coaching academic and athletic competitions. Our teachers not only encourage and mentor our students outside of school hours, but they also give their time at home to plan challenging instruction and analyze test scores in order to keep pushing our students to better themselves daily.

A Providence St. Mel education has profound impact on the lives of our students and exemplifies for future generations that, no matter the adversities they face along the way, they too can succeed. Unlike other schools in our West Side community, our perfect college acceptance rate is accompanied by a drastic improvement in standardized test performance. The average student that enters Providence St. Mel School as a freshman will increase their ACT score by 7-8 points from 9th grade to 11th grade. The Class of 2018 boasts an average ACT score of 25! As a result of this hard work, universities throughout the nation recognize Providence St. Mel students are competitive wherever they attend and are worthy of the valuable scholarships they receive.

Our students continue to achieve in spite of the despair happening outside of our doors. Just steps from our school, we are confronted with a community riddled with drugs, violence, and poverty. However, rather than discouraging our faculty and staff, this reality motivates us. As we say in our mission statement, we are not frightened by the challenges of reality. Our faculty believes that through the power of education, we can change our conception of this world, and our place within it. We defy the odds every single day.

As we reflect on another accomplished year we are so grateful, yet again, for our ardent and caring supporters. With your generous support, our bright, hopeful, and determined students can — and will — continue to thrive. Our students' success is dependent upon the enduring commitment of our faculty, staff, the Board of Trustees, as well as the generosity and support of our donors. We would be remiss if we didn't take a moment to recognize you for your assistance.

Words cannot express how grateful we are for your support.

A MESSAGE FROM MIKE O'HALLERAN AND GREG PUSINELLI, CO-CHAIRS OF THE BOARD OF TRUSTEES



**Thank you for making a
life-changing education
and college dreams a
reality!**

**A TRIBUTE TO OUR TEACHERS
2018 Annual Report**

**We know that providing a
dynamic and comprehensive
learning experience is no simple
feat. The faculty is**

INSPIRATIONAL

**helping students with diverse
learning needs gain confidence
and prepare for success in all of
their future endeavors—often
sacrificing their personal time in
the process.**



Once again, we are elated to celebrate another successful year at Providence St. Mel School! Instilled with confidence and the skills necessary, our students have yet again achieved an unparalleled level of success. To be sure, the past and future accolades of Providence St. Mel and our distinguished record of accomplishments would not be possible without generous support from such kind and caring friends as you. Your investment has empowered students to reach their highest potential and has made college dreams with impressive scholarships a reality for students in a community where higher education is not a given.

As long-time board members of Providence St. Mel School, we are thrilled, honored, and so proud of the academic successes and the national recognition received by both our faculty and our students. This year, we are privileged to begin our tenure as Co-Chairs of the Board of Trustees. We have both served as chairs in the past, and we are proud to remain resolute in the Providence St. Mel mission to be a school where every child is able to receive a globally-competitive education.

The Providence St. Mel model is, without a doubt, building the next generation of leaders and innovators in a community that continues to grapple with crime, a lack of opportunities, and violence. Providence St. Mel stands as a reminder of what is possible if someone invests in the West Side community. We know that attending a prominent college can truly change the lives of our students, and that this life-changing education is only accessible to our students when rewarded with significant financial assistance.

It is especially integral that we recognize the determination and persistence of the hardworking teachers at Providence St. Mel. We know that providing a dynamic and comprehensive learning experience is no simple feat. The faculty is inspirational, helping students with diverse learning needs gain confidence and prepare for success in all of their future endeavors—often sacrificing their personal time in the process. By giving to Providence St. Mel, you are providing these dedicated professionals the resources needed to guide our students to success through an enriching learning experience.

Most independent schools can expect their tuition to cover 85% of the cost of educating students, according to The National Association of Independent Schools. At Providence St. Mel School, our tuition can only meet less than 40% of the operating cost to educate our students. Therefore, we are responsible for fundraising the difference in order to continue to provide this life-changing education in a high-need community.

Your investment in the future of our students enables this remarkable school to deliver an exceptional, transformative, and competitive college-preparatory education to deserving children whose families face immense financial limitations. In a city where one's access to a quality education is all-too-often determined by zip code, Providence St. Mel opens doors for its students that would not otherwise be available. These invaluable avenues help to create a richer life and future for our students and for the generations of students who will follow in their footsteps. As we strive for another year of 100% college readiness and acceptance, please join us in continuing to support Providence St. Mel so that even more students on the West Side can receive this premier education and the hope of a better tomorrow.

As you read this Annual Report and reflect on the highlights of the 2017-2018 academic year, please know that all of us at Providence St. Mel are truly fortunate and honored to have such a strong community of supporters who share in our belief that an exemplary education can make a profound difference in the lives of our students and for their families. Together, let us continue to educate students who might not otherwise have the opportunity to receive a prestigious education!

CLASS OF 2018 COLLEGE ACCEPTANCE LIST



"Providence St. Mel has allowed me to expand my vision. I wouldn't have dreamed as big or applied to some of the top schools, but the teachers helped to push me for something larger. I love being in an environment that truly supports my dreams and future."

- La'Treil A., Class of 2018

A TRIBUTE TO OUR TEACHERS
2018 Annual Report

100%

**OF GRADUATES
HAVE BEEN ACCEPTED TO
FOUR-YEAR
COLLEGES AND UNIVERSITIES**



Top 200 National Universities/Liberal Arts Colleges
***Top 50 National Universities/Liberal Arts Colleges**
****IVY LEAGUE****

Alabama A & M University
 Alabama State University
Alma College
American University
Arizona State University
Augustana College
 Baldwin Wallace University
Ball State University
Beloit College
 Blackburn College
***Boston University**
 Bradley University
 Butler University
 Calvin College
***Carnegie Mellon University**
 Carroll University
Carthage College
 Central State University
 Chicago State University
 Clark Atlanta University
 Clarke University (IA)
Coe College
 College for Creative Studies
Colorado State University
 Columbia College Chicago
 Columbia College
 Concordia University
****CORNELL UNIVERSITY****
 Creighton University
DePaul University
DePauw University
 Dominican University
 Drake University
Drexel University
 Drury University
 Eastern Illinois University
 Elmhurst College
***Emory University**
Fisk University
Florida State University
 Fordham University
George Washington University
 Georgia State University
 Goshen College
 Governors State University
 Hampton University

Hope College
Howard University
Illinois College
Illinois State University
Illinois Wesleyan University
Indiana University
Indiana University NW
 Indiana State University
 Iona College
Iowa State University
 Iowa Wesleyan University
 Jacksonville University
Kansas State University
 Kendall College
***Kenyon College**
 Lakeland College
Lawrence University
 Lawrence Technological University
 Lewis University
 Loras College
Louisiana State University
Loyola University
 MacMurray College
Marquette University
 Marymount CA University
Maryville University
Michigan State University
 Millikin University
Mississippi State University
 Molloy College
 Mount Mercy University
***New York University**
 North Central College
Northern Illinois University
Ohio State University
Ohio Wesleyan University
***Pennsylvania State University**
Purdue University
 Quincy University
 Roosevelt University
 St. Catherine University (MN)
St. Mary's College (IN)
 Saint Mary-of-the-Woods College
St. Norbert College

St. Olaf College
 St. Xavier University
Seton Hall University
Southern Illinois University—Carbondale
 Southern Illinois University—Edwardsville
Spelman College
Syracuse University
 Tuskegee University
University of Arizona
University of Central Florida
***University of Chicago**
University of Dayton
University of Denver
 University of Detroit
 University of Dubuque
University of Illinois—Chicago
 University of Illinois—Springfield
***University of Illinois—Urbana-Champaign**
 University of Indianapolis
University of Iowa
University of Kansas
University of Kentucky
University of Louisville
University of Maryland—Baltimore County
 University of Memphis
***University of Michigan**
University of Missouri

University of Nevada—Las Vegas
****UNIVERSITY OF PENNSYLVANIA****
University of Pittsburgh
University of Texas
University of Tulsa
University of Washington
***University of Wisconsin-Madison**
 University of Wisconsin-Milwaukee
 University of Wisconsin-Whitewater
 Valparaiso University
***Vanderbilt University**
***Villanova University**
Wartburg College
***Washington University in St. Louis**
 Wesley College
 Western Illinois University
Western Michigan University
Wheaton College
Wittenberg University
 Xavier University (LA)
 Xavier University (OH)
 Youngstown State University



2017 - 2018 HIGHLIGHTS



**We are #psmproud of
our students'
accomplishments this
past year!**

**A TRIBUTE TO OUR TEACHERS
2018 Annual Report**

**Would You Like To
Visit Providence St.
Mel School?**

Call us to schedule a school tour
and see the difference that your
support is making at our school.

773-722-7756



CELEBRATING 50 YEARS WITH RENEE KALLOK

Congratulations to Ms. Kallok for her 50 years of hard work, dedication, and passion for Providence St. Mel School, our mission, and our students! Providence St. Mel School's history of academic excellence and legacy of impressive college scholarships would not be possible without Ms. Kallok's tenacity and commitment.

THE TRADITION CONTINUES!

Congratulations to the Providence St. Mel Class of 2018. Once again, since 1978 100% of our seniors were accepted to four year colleges and universities. On National College Decision Day, students celebrated their accomplishments, hard work, and bright futures by wearing gear from the colleges they plan to attend.

DR. MARTIN LUTHER KING, JR. DAY

On January 15th, 2018 Providence St. Mel celebrated the life of Dr. Martin Luther King, Jr. and the legacy of the Civil Rights Movement. We were honored to have Rev. Dr. Marshall Hatch, Sr. as the keynote speaker.

BEN CARSON SCHOLARS

Congratulations to the Providence St. Mel students who received the 2018 Ben Carson Scholarship award for academic accomplishments and humanitarian achievements. This award includes a \$1,000 scholarship that is invested for their college education. Congratulations to Maya D. (5th Grade), Connor S. (5th Grade), Titus E. (8th Grade), Jada C. (9th Grade), Nia J. (9th Grade), Ezekielus S. (9th Grade), Malik E. (10th Grade), and Malissa L. (11th Grade)!



2017 - 2018 HIGHLIGHTS

PERCY JULIAN STEM SYMPOSIUM

Congratulations to Erik I. who won 1st Place with his project in the freshman/sophomore group at the annual Percy Julian (STEM) Symposium at Oak Park River Forest High School! He won against all STEM categories and over 60 students in his group! He showed great depth of knowledge, poise in presentation and even some humor in his pure mathematics presentation: "Explorations and Investigations of Geometric and Aesthetic Measures of Iterated Functions on 2D Unitary Algebras over R."

LEGO TOURNAMENT

Congratulations to the ten Providence St. Mel 6th and 7th graders for receiving an award for the "Hydrodynamics" LEGO Tournament on Monday, December 11th. The winning PSM team created a website to generate contributions to a charity that installs wells in Africa. We are proud of their global citizenship!

2018 SCIENCE FAIR

Students shared their science projects during the annual Science Fair. We are **#psmproud** of Providence St. Mel students who use their talents as problem solvers and critical thinkers in order to be the next generation of leaders and innovators!

WORLDWIDE YOUTH IN SCIENCE AND ENGINEERING

The following students placed in the WYSE regional and advanced to the sectional.

- Louis H. - 2nd Place in English
- John B. III and Erik I. - 1st and 2nd Place in Computer Science respectively
- John B. III, Ben D., and Justin A. - 1st, 2nd, and 3rd Place in Chemistry respectively
- Erik I. - 1st Place in Math
- Providence St. Mel Team - 2nd Place in 700 Division

STOCK MARKET GAME

Congratulations to the students participating in the Chicago Area Stock Market Game! Our teams in the 4-8 grade division won 2nd and 3rd Place. Our high school students received 2nd Place in their age group.

This spring, nearly 13,000 Illinois students in grades 4-12 participated in this competition! In the Chicago Grades 4-8 competition, 206 student teams participated. In the Chicago Grades 9-12 competition, 93 student teams participated.

To celebrate their success, they attended an awards reception on Tuesday May 8th at the Chicago Board Options Exchange (CBOE)! At the ceremony, six teams were selected to give presentations. We are delighted that all three of our teams were selected to present.



REGIONAL AFRO-ACADEMIC, CULTURAL, TECHNOLOGICAL AND SCIENTIFIC OLYMPICS (ACT-SO)

Three of our students competed in the regional competition of ACT-SO, for the DuPage County Chapter. John B. received an Honorable Mention in Chemistry. Justin A. received a silver medal in Computer Science and a gold medal in Engineering. Erik I. received gold medals in both Mathematics and Physics.

The competition is sponsored by the National Association for the Advancement of Colored People (NAACP), and holds contests in Mathematics and Science, as well as other categories.

NATIONAL ACT-SO COMPETITION

Justin A. and Erik I. advanced to the National ACT-SO Competition, held in San Antonio, Texas last July! Last year, Erik I. won the Silver Medal in Mathematics.

ORGAN / TISSUE DONOR AWARENESS

Jada A. won 1st Place in her grade level and overall for the 2018 Organ/Tissue Donor Awareness Student Poster Contest for the state of Illinois.

AMERICAN MATHEMATICS COMPETITION

Several of our top 10th, 11th, and 12th grade students participated in the American Mathematics Competition. Our winners were: Nazeerah M. (3rd Place), John B. (2nd Place), and Eric I. (1st Place).

ILLINOIS JUNIOR ACADEMY OF SCIENCE REGIONALS

Three of our 7th grade students participated in the Illinois Junior Academy of Science regional competition at the Museum of Science and Industry. Robert M. III won the Gold Award, and Laila G. won the Silver Award. Alika N. won the Chicago Department of Water Reclamation Special Award.



2017 - 2018 HIGHLIGHTS

Six of our female high school students had the extraordinary opportunity to explore the world of STEM research at the Science Careers in Search of Women conference. The conference provides participants with the unique opportunity to explore their desired profession or area of interest through interaction with Argonne's world-class women scientists and engineers. Below are some of their takeaways from the event.

"This trip to Argonne was by far the best field trip I've ever been on. When we were there, we got to connect with a lot of current workers and received some inspirational messages and advice from all of them.... **I even got a card from one of the Argonne members for more connections with scholarships and internships, which is great on my behalf. I also got to see the laboratories and see how they work on a day to day basis and even learn some fun facts about what they do and how it applies to modern day society....** Hopefully I have the opportunity to go back. It was a really great experience and I hope that at Providence St. Mel, this could be a staple in the science department."

➤ **Ayonie E.**

"I really think that the Women's Day at Argonne National Laboratory was a great experience and that the school should continue to send students there in the future. **This day was inspiring to me because you get to see all these successful women in different careers and it makes you want to be successful as well. I want to pursue Medicine and maybe even sports medicine and the woman that I sat next to at lunch was a physician therapist and we had a great conversation about the challenges and the requirements to get into that field....** This program helped me network and explore different careers that I otherwise would not have had the opportunity to do so."

➤ **Kadeja L.**

"It was truly inspiring. I learned about a woman, Marie Curie, who was a chemist that conducted research on radioactivity. I enjoyed the tours and I went to four different stations where we learned about magnets and physics as well as electrons and why it is important that they travel in a vacuum... **Overall I had a great experience, but I couldn't help but notice: there were almost no African-American women scientists anywhere. Because of that, I think it is extremely important to expose young black women from PSM to these type of events.** It was fun and exciting and it may spark something in them and cause them to study Biochemistry, Environmental Science, Computer Science, etc. **Maybe attending that event could change their life.**"

➤ **Malissa L.**



ILMEA JUNIOR COMPETITION

Nine students participated in the ILMEA competition at Reed-Custer Middle School, and seven students were chosen to participate in the festival performance on November 4th. Congrats to the following students: Ajene C., Mario H., Daniel L., Ogechi O., Aiden S., Aiyannah T., and Dakota H. for band!

AMERICAN CHORAL DIRECTORS ASSOCIATION

In February, the following singers were chosen to perform the world premiere of a new choral piece as part of the American Choral Directors Association Chicago High School Honors Choir at the Harris Theater in Millennium Park: LaNiece D., Malik E., Tia E., Jalen F., Kaitlyn M., Richard H., and Aiyannah T.

WEATHER SKETCHERS

We had seven students featured on Tracey Butler's Weather Sketchers on the ABC7 morning news program this year. Compliments to the following talented artists: Charles S., Erica P., Dion N., Myles H., Paulie C., Jordan W., and Kennedy B.

ILMEA SENIOR COMPETITION

Five Providence St. Mel high school students were selected for the ILMEA District 1 festival concert. Congratulations to the following students: LaNiece D., Tia E., Malik E., Jalen F., and Kaitlyn M.!

HAMILTON

Once again, our high school students were selected to take part in **Gilder Lehrman Institute of American History's** prestigious **Hamilton Education Program**.

Congratulations to John B. and Erik I. for being selected from hundreds of area students to perform their original piece on Benjamin Banneker before the matinee performance of Hamilton.

LETTERS ABOUT LITERATURE

Our 7th graders participated in the Center for the Book's national "Letters About Literature" contest. Illinois Secretary of State Jesse White recognized the achievements of the below students:

Honorable Mention: Madison B., Ajene C., Mario H., Mallanah J., Jaden M., Aaliyah R., Aiden S., Rachel S., and Caleb W.

Semi-Finalists: Zyon E., Journee M., and Niaja W.



2017 - 2018 HIGHLIGHTS

SISTER ACT

In November, students performed Sister Act, with April Shipp, featured artist at the Joffrey Ballet, as the choreographer for this production. Our talented students shined in our ninth annual musical performance.

REGIONAL ACT-SO COMPETITION

Providence St. Mel students also participated in the ACT-SO competition in the Dance, Music, Visual Arts, Entrepreneurship, Culinary Arts, and the Humanities categories. LaNiece D. won the Gold Medal in the Music-Vocal - Classical category, and Nara F. won the Gold Medal in the Music-Instrumental - Classical category. In the Poetry - Performance category, Toni R. won 1st place, Tatiana T. won 2nd place, and Travelled W. won 3rd place! In the Poetry - Written category, Aiyonie E. won 3rd place! In the Drawing division, Tea F. won 3rd Place. Toni R. also won 3rd Place in the Painting category.

IESA SOLO AND ENSEMBLE CONTEST

Providence St. Mel Middle School musicians earned 12 Division I ratings and 4 Division II ratings this March. Several of the students

received perfect scores. Congratulations to vocal soloist Jaiden C., and the 15 singers in the "Travelin' Train" ensemble for winning two "Best-of-the-Day" Awards!

LUTHERAN SUMMER MUSIC

PSM students participated in Lutheran Summer Music (LSM), a residential performance and training program for young musicians in grades 8-12. Through this program, students have the opportunity to perform in band, choir, or orchestra and take a variety of electives to build new musical skills and pursue their unique musical interests.

IHSA SOLO AND SMALL ENSEMBLE CONTEST

Nathan F., Louis H., and Mikayla P. received a Division 1 on their trio performance. Providence St. Mel received 12 Division I (Superior) ratings and 6 Division II (Excellent) ratings. Richard H. earned a perfect score of 40 points for his vocal solo, and LaNiece D. won the "Best-of-the-Day Award" for her vocal room!

DANCE COMPANY RECITAL

Our dynamite students performed at the Providence St. Mel Dance Company's recital. Congratulations to the performers for showcasing their hard work and talent!



TRACK AND FIELD

Congratulations to Sam H.! This May, Sam qualified for State in the 400 meter run. The State meet will take place from May 24-26 at Eastern Illinois University. Sam ran a 50.75" which beat all times!

PEP RALLY

On November 16th, the gym was filled with energy as students cheered on their fellow **#psmknights** during our Pep Rally! Our Knights, Lady Knights, and MidKnights demonstrated that they are ready for a winning season. Deion J. dominated in the dunk contest. **#GoKnights!**

VARSITY KNIGHTS BASKETBALL

Congratulations to the PSM Knights Boys Varsity Basketball team for another victorious season! This year the varsity boys basketball team qualified as Sectional Champions of the IHSA tournament. Our fantastic cheerleaders cheered them on along the way!



2017 - 2018 TEACHER & STAFF HIGHLIGHTS

MR. GRAHAM VISITS PROVIDENCE ST. MEL

In October, we were honored to have Mr. Stedman Graham join us as he taught our faculty and staff the tools and skills of Identity Learning. We thank Mr. Graham for taking the time out of his busy schedule to help Providence St. Mel teachers enhance the work they do each day.



TEACHER APPRECIATION NIGHT AT WRIGLEY FIELD

For the second year, we celebrated Teacher Appreciation Day at beautiful Wrigley Field with a Cubs win, where Mr. Paul J. Adams III threw out the first pitch! We are truly [#psmproud](#) of our hardworking and dedicated teachers. Thank you, teachers, for your belief in the potential of every Providence St. Mel student and for creating successful futures for our students!



NORTHWESTERN DISTINGUISHED SECONDARY TEACHER AWARD

Congratulations to Ms. Stopka for being nominated by a Providence St. Mel alum for the Northwestern University Distinguished Secondary Teacher Award for 2018. Award recipients will be recognized at Commencement at Northwestern. We wish her luck for this honor!



DR. MARTIN LUTHER KING, JR. AWARD

Congratulations to Paul J. Adams III for receiving the Dr. Martin Luther King, Jr. Award on February 13th from The Leaders Network! We congratulate you, and honor your lifetime of **working, planning, building, and dreaming** for a brighter future.



JOHN B. III

Ohio State University
Computer Science

KARINTON T.

Washington University
in St. Louis
Education

LA'TREIL A.

Cornell University
Biology in Society

MAISA M.

Indiana University, Kelley
School of Business
Marketing



FINANCIALS



FINANCIALS

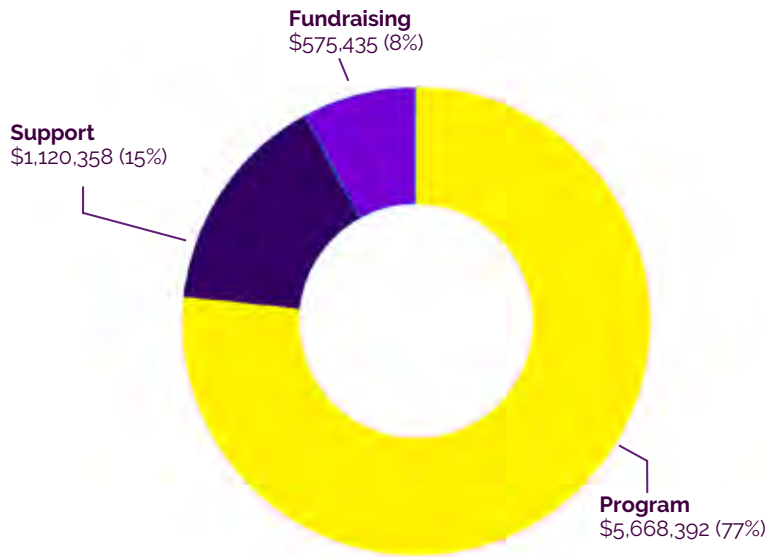
July 1, 2017 - June 30, 2018

A TRIBUTE TO OUR TEACHERS
2018 Annual Report

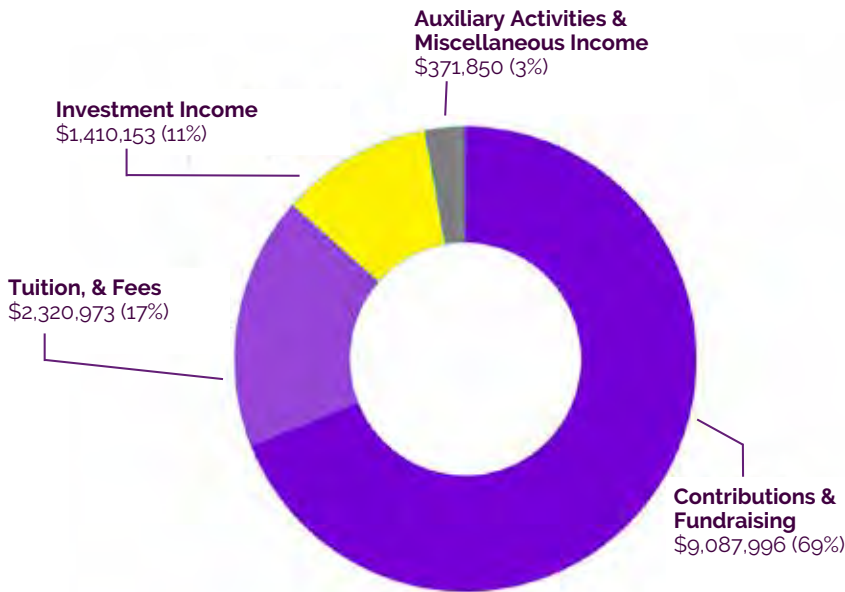
NEARLY
\$30 million
IN COLLEGE
SCHOLARSHIPS
has been awarded to our
graduates
OVER THE PAST
FIVE YEARS



EXPENSES 2017-2018



SOURCES OF REVENUE 2017-2018



CORNERSTONE SOCIETY



The Cornerstone Society consists of friends and supporters who provide a solid foundation through their generous gifts. This society honors those who have made contributions that total \$100,000 or more since their involvement began with Providence St. Mel School. Gift totals since 1978 through June 30, 2018. The Cornerstone Society is also recognized on our Donor Wall, a series of plaques displayed in the front hallway of the school.

A TRIBUTE TO OUR TEACHERS 2018 Annual Report

25

CLASS OF 2018 AVERAGE ACT SCORE

*Please Note: We have made an earnest effort to ensure accuracy. Should you find any discrepancies, please accept our apologies and notify the Office of Development at **773-722-7756**.*



\$3 MILLION AND ABOVE

The Coleman Foundation
Mr. Thomas H. Dittmer
Mr. and Mrs. J. Thomas Hurvis
Hurvis Charitable Trust
Mr. and Mrs. Daniel Pritzker
The Jay Pritzker Foundation
Renee and Edward Ross Foundation

\$1 MILLION - \$2.9 MILLION

Anonymous
Aon Corporation
The Basler Family
Mr. and Mrs. Douglas S. Basler
Mr. Donald N. Basler
United Conveyor Foundation
Bestfoods Educational Foundation
Debora de Hoyos and Walter Carlson
Lloyd A. Fry Foundation
Mr. and Mrs. Michael L. Keiser
Oscar G. & Elsa S. Mayer Family Foundation
Michael and Kay O'Halleran
The Pusinelli Family
Gregory and Marie Pusinelli
John and Maxine Pusinelli
Mr. Samuel C. Schuppe
Ted Hoyer Charitable Trust
Ms. Marie C. Hoyer
Mr. and Mrs. John Shutack
Ms. Oprah Winfrey

\$500,000 - \$999,999

Anonymous
The Barr Fund
The Canning Foundation
Mr. Gary Elden and Ms. Phyllis Mandler
Mr. and Ms. Robert J. Glickman
The Robert and Caryn Glickman Foundation
LINK Unlimited
Philip J. and Carol J. Lyons
Philip J. and Carol J. Lyons Foundation
The John D. and Catherine T. MacArthur Foundation
Ronald McDonald's Corporation
Ronald McDonald House Charities
Mrs. Mike Michael

The Northern Trust Company
Polk Bros. Foundation
Pritzker Cousins Foundation
Refco, Inc.
Ronald H. Ringer Foundation
Sage Foundation
Dr. Scholl Foundation

\$250,000 - \$499,999

Anonymous
Caroline and John Ballantine
A. G. Becker Foundation
Mr. Richard M. Burrige, Sr.
Helen Brach Foundation
Mr. and Mrs. Bruce W. Calvert
The Chicago Community Trust
The Fort James Foundation
GE Commercial Finance
Stephanie and Greg Guyett
Hackberry Endowment Partners
Julie and Parker Hall
Michael and Diane Hora
Ingredion Incorporated
Johnson Scholarship Foundation
Ms. Judith Joy
Dream Makerz Foundation
The Joyce Foundation
The Kovler Family Foundation
Mr. Randolph R. Kurtz
Leonard Loventhal and Laura Glaser
The Fred Maytag Family Foundation
Mary M. McGuire Trust
Jack Miller Family Foundation
Daniel Murphy Scholarship Fund
Mr. Nickolas J. Neubauer
Plastipak Packaging, Inc.
Ms. Janet Relos
Mike and Maureen Roberts
Dona and Samuel Scott
Scott Foundation
Gertrude E. Skelly Charitable
Foundation
Mr. and Mrs. Sanford Takiff
United Airlines
Wells Fargo Insurance Services
W.P. and H.B. White Foundation



CORNERSTONE SOCIETY

\$100,000 - \$249,999

Anonymous (2)

Mr. Paul J. Adams III

Guy A. and N. Kay Arboit Charitable Trust

Mrs. Linda Ray Army

J.W. Bagley Foundation

Bankers Life & Casualty

Mrs. Janis Battle

The Alvin H. Baum Family Fund

Albert Y. and Jackie Bingham

BP

Marc and Liza Brooks

Fred J. Brunner Foundation

Mr. and Mrs. Stanley J. Calderon

Cashel Foundation

Castle Foundation

CBOT Foundation

Children's Scholarship Fund

Chubb

Citadel Group Foundation

Crown Family Philanthropies

Cuneo Foundation

Mr. and Mrs. Domenic DaValle

Keith Davis Scholarship Fund

Mrs. Jeffrey C. Doane

R.R. Donnelley & Sons Company

Dow Chemical USA

Mr. Harve A. Ferrill

Field Foundation of Illinois, Inc.

First Bank of Highland Park Foundation

The Andrew and Alice Fischer Charitable Trust

Marguerite Delany Hark Foundation

William Randolph Hearst Foundation, Inc.

HSBC - North America

Mr. Howard E. Jessen

Katten Muchin Rosenman, LLP

Susan and Richard Kiphart

Becky and Lester Knight

Roundtable Healthcare Partners

Liberty Mutual Group, Inc.

Jim and Kay Mabie

Mayer Brown, LLP

Mr. William E. Mayer

Mr. Barry Mayo

Col. Stanley R. McNeil Foundation

Mr. Chuck McQuaid

Morgan Stanley Dean Witter

Motorola Foundation

John Nuveen & Company, Inc.

Océ-USA, Inc.

Old World Industries, Inc.

Roberta & Geoffrey Parson

Mr. and Mrs. Peer Pedersen

Pepper Construction Group

Premark International

Mr. and Mrs. J. Christopher Reyes

Ritzenthaler Family Foundation

RREEF Capital Fund

Mr. and Mrs. Patrick G. Ryan

Dr. and Mrs. Anthony J. Salemi

Sara Lee Corporation

Mr. and Mrs. Harry J. Seigle

Denise and Joe Seminetta

Albert J. Speh Jr. and Claire R. Speh Foundation

St. Paul Companies, Inc.

TCF Bank

Tellabs, Inc.

Wiedner & McAuliffe, Ltd

William Blair and Company, L.L.C.



ALUMNI SOCIETY



The Alumni Society consists of alumni who provide financial contributions in support of sustaining the future of Providence St. Mel. This society honors alumni who have made contributions that total \$1,000 or more since graduation.

A TRIBUTE TO OUR TEACHERS 2018 Annual Report

88%
**OF OUR
FACULTY
HAVE AN
ADVANCED
DEGREE**



FOUNDER'S CIRCLE

\$200,000+

Michael E. Hora, St. Mel '61
Michael D. O'Halleran, St. Mel '68

LEADER'S CIRCLE

\$100,000 - \$199,999

Anthony J. Salemi, St. Mel '67

PRESIDENT'S CIRCLE

\$50,000 - \$99,999

Marietta C. Bratta-Garber, Providence '60
Gladys M. Nowicki, Providence '46

PRINCIPAL'S CIRCLE

\$25,000 - \$49,999

Carl L. Harris '77
Cassandra R. Minor '84

DREAMER'S CIRCLE

\$10,000 - \$24,999

Letitia D. Dillard '96
Michael J. Graft, St. Mel '50
Leona Jackson, Providence '39
Sylvia L. Jones '89
Ronald L. Price '78
Gerald W. Shay, St. Mel '60
Thomas A. Sullivan Trust, St. Mel '20
Phyllis A. Wojtar, Providence '44

BUILDER'S CIRCLE

\$5,000 - \$9,999

John E. Abney '96
Albert L. Braggs '69
Kimberlee J. Burt '88
Jamelyn E. Cotton '86
John Coughlin, St. Mel '68
Timothy D. Ervin '91
Joseph F. Fels, St. Mel '40
Wayne L. Haraldson, St. Mel '59
Beatrice C. Hurey '85
Angela F. Johnson-Williams '89
Clement J. McDonald, St. Mel '67
Eugene L. Moore '97
Nicholas Piediscalzi, St. Mel '48
Robert C. Sassetti, St. Mel '47



ALUMNI SOCIETY

PLANNER'S CIRCLE

\$2,500 - \$4,999

Peter A. Brusca, St. Mel '59
Noreen Dennehy Jasinski, Providence '52
Vickie V. Fair '79
Cecelia W. Fairfax '74
Gloria A. Franchi, Providence '49
Marie Gartland, Providence '68
Jerald T. Gary '03
Lawrence E. Grisham '69
Lowell D. Hamilton '85
Patricia S. Hanlon, Providence '46
Linton Johnson '98
Alice M. Maresh, Providence '40
Patrick Martin, St. Mel '67
Daniel R. McLean, St. Mel '55
Rosemary O'Connell, Providence '55
James J. O'Connor, St. Mel '65
Virginia R. Reed, Providence '54
Earl J. Ruppert, St. Mel '42
Betty Sloan, Providence '55
Deborah Sturgis-Hinton '89
John F. Sweeney, St. Mel '52
Calvin C. Thurman '72
Patricia Wilde, Providence '53

WORKER'S CIRCLE

\$1,000 - \$2,499

Virginia B. Anderson, Providence '65
Adwoa V. Antwi-Barfi, '00
Joseph P. Bauer, St. Mel '63
Kathryn A. Bernards, Providence '66
Michael P. Brennan, St. Mel '63
DaToya J. Burtin Cox '96
Gregory L. Canty '83
Ave Maria Capitanini, Providence '45
Janetta Cotton '86
Dorothy Crane Davis, Providence '40
Anita Curi, Providence '40
Patricia A. Danloe, Providence '57

Deila L. Davis '91
Bobby T. Dillard '96
Emmanuel Ford '02
Ericka K. Gibson '90
Matthew R. Humphries '92
George Johnson '72
Roberta F. Arenz Kaminski, Providence '59
Thomas E. Kearney, St. Mel '46
Robert P. Littlefield, St. Mel '44
Chester A. Lizak, St. Mel '54
Margaret Loftus, Providence '46
Tamiko Lowery Jones '91
Irene V. Maksym, Providence '60
Arthur C. Martin, St. Mel '37
Patrick J. Mellett, St. Mel '55
Sam L. Miller, St. Mel '44
Nedra Miller Karim '75
Roosevelt Moncure '80
Shawn W. Nelson '90
John R. Olechny, St. Mel '65
Tonya Price '85
Daniel Pankiewicz, Providence '57
Myla M. Patterson-Smith '96
Bill Reider, St. Mel '46
Owens Shelby '00
Irene Smith-Steele '75
Kimbrel D. Stephen '72
Stephanie Taylor '84
Kimber A. Turner '03
Kimberly A. Whiting '87
Aleatha Wilson '87
Christine Wilson '88
Diane A. Zachwieja, Providence '60

THANK YOU TO OUR TEACHERS



IN-KIND GIFTS



In-Kind Gifts

Gift Period:

July 1, 2017 - June 30, 2018

A TRIBUTE TO OUR TEACHERS
2018 Annual Report

“The teachers I’ve met have left a huge impression on me, and I hope their wisdom carries on.”

- John B., Class of 2018



Mr. Paul J. Adams III
Mr. Brad and Mrs. Meghan Archibald
Ayco, A Goldman Sachs Company
Breakthrough Beverage Group
Ms. Jeanette Butala
Mrs. Jeffrey C. Doane
Mr. John F. Egan
Eimer Stahl, LLP
Mr. David English
Mr. Harve A. Ferrill
Michael and Diane Hora, St. Mel '61
Mr. J. Thomas Hurvis
GE
Mr. Greg Jenkins
 Jewell Events Catering
The Joffrey Ballet
Ms. Judith Joy
Mrs. Kelley Kinsella
Mr. and Mrs. Larry Mayer
Mayer Brown LLP
Reggie Murray
Michael and Kay O'Halleran, St. Mel '68
The Pusinelli Family
 Greg and Marie Pusinelli
Ram Nation
Revolution Brewing
Mr. Dan and Mrs. Karen Pritzker
Irving Richardson, 98
Mr. Andrew S. Rosenman
Mr. Andrew Sims
Denise and Joe Seminetta
Mr. David L. Steinberg
 Copy-Mor, Inc.
Sterling Bay
WFMT
William Blair & Company



TRIBUTE GIFTS



Tribute Gifts

Gift Period:

July 1, 2017 - June 30, 2018

A TRIBUTE TO OUR TEACHERS
2018 Annual Report

15 years

**AVERAGE FACULTY
TENURE**



IN HONOR OF

MR. PAUL J. ADAMS III
Dr. James G. Basker
Mr. and Mrs. Michael J. Graft

MRS. MEGHAN O'HALLERAN ARCHIBALD
Ms. Katherine Cooney

MR. EDWARD C. AUXER
Ms. Sara Wing

MRS. MARY JO BASLER
Mr. and Mrs. Roger K. Deromedi

MS. JEANETTE M. BUTALA
Dr. David and Mrs. Bev Baar
Mr. and Mrs. Michael J. Graft

MR. JOHN DEPPONG III
Mr. and Mrs. John Deppong, Jr.

MRS. JEFFREY C. DOANE
Ms. Marianne Brackey

MS. ADRIENNE FAMA
Mr. Randy Fama

MR. JOHN W. FOUNTAIN
Ms. Gloria A. Franchi

MR. MICHAEL FLYNT
Mr. Jackie C. Tyler

MR. JOHN S. GILLGREN
Mr. Jackie C. Tyler

MS. MATILDA GREEN
Ms. Elizabeth Green-Brunner

MS. RUBY HUMPHRIES
Ms. Jackie C. Tyler

MR. OSCAR D. JOHNSON, JR.
Mr. and Mrs. David Evely

MS. JAN LIWSKI
Ms. Jackie C. Tyler

SISTER MAUREEN A. MCCARTHY, S.P.
Roy Jasinski and Noreen Dennehy Jasinski

MR. DANIEL AND MRS. KAREN PRITZKER
Mr. and Mrs. David N. Rothschild
Mrs. Cindy Pritzker

MR. GREG PUSINELLI
Ms. Mary Jo Campbell

MIKE AND MAUREEN ROBERTS
Ms. Paula T. Grasso

MRS. MARCI VAN GILDER-RUBIN
Mr. and Mrs. Harold Rubin

MR. LUTHER VAUGHTER
Mr. Harmon P. Vaughter

WOUNDED WARRIORS PROJECT
Mr. Calvin C. Thurman

IN MEMORY OF

MRS. JACQUELINE BURTIN
Mr. Darnell Burtin
DaToya Burtin-Cox
Mr. Paul J. Adams III
Ms. Patricia Jackowski
Mr. and Mrs. Davis J. Alston
Mr. and Mrs. S. and Patterson Luckett
Mr. and Mrs. Donnie L. Shaw, Jr.
Ms. Jeanette Butala
Ms. Emma Cox
Ms. Barbara Bell

MS. COURTNEY M. GARDNER
Ms. Janet Gardner

MYRTLE HEDLUND
Ms. Patricia Hesch

MS. BESSIE K. HENSLEY
Mr. and Mrs. Douglas S. Basler

MR. KENNETH E. HENNIG
Mrs. Christine A. Hennig
Ms. Carolyn Benedict

MS. MILDRED HESCH
Ms. Patricia Hesch

MR. ROBERT HESCH
Ms. Patricia Hesch

MS. NORA KILGALLON BUZZELLI
Ms. Marrieta Bratta-Garber and Mr. Samuel Garber

MR. JAMES F. KEARNEY
Mr. Leo Hudson

MS. PATRICIA MAROVICH
Mary J. McEnery

MS. JEFFREY WARREN MAYER
Ms. Eve Mayer

MR. WILLIAM C. MITCHELL
Mrs. William C. Mitchell

MR. CARL EDWARD MUCKLEY
Ms. Mary Ann Berry

MS. FELICIA PONTECORVO
Ms. Maureen R. Avina

MR. ROBERT ROBINSON
Mr. Jackie C. Tyler

MS. EDITH RUBEN
Ms. Marilyn R. Ciucci

MR. JOHN AND MRS. PATRICIA SHUTACK
Mr. and Mrs. Daniel L. Duffy

MS. MARIA TESMER
Ms. Marrieta Bratta-Garber and Mr. Samuel Garber

MR. QUINN WATERLOO
Mrs. Claudia Waterloo Tornquist

GIFTS BY INDIVIDUALS



**Thank you to our
generous donors who
make Providence St. Mel's
premier education
possible!**

Gift Period:

July 1, 2017 - June 30, 2018

**A TRIBUTE TO OUR TEACHERS
2018 Annual Report**

MEET OUR DEVELOPMENT STAFF

Kathryn Dillon
Development Manager
DillonK@psmnow.com
773-722-4600 x2106

Stephanie Ovitt
Development Associate
OvittS@psmnow.com
773-722-4600 x2104

Melissa Famularo
Development Associate
FamularoM@psmnow.com
773-722-4600 x2107

Marci Van Gilder
**Development Associate,
Grants and Foundations**
VangildM@psmnow.com
773-722-4600 x2101



\$100,000+

Mr. J. Thomas Hurvis
Hurvis Charitable Foundation

\$50,000 - \$99,999

The Basler Family
Mr. and Mrs. Douglas S. Basler
Mr. Donald N. Basler
United Conveyor Foundation
Mr. and Mrs. Bruce W. Calvert
Loretta and Bob Cooney
Robert J. & Loretta W. Cooney
Family Foundation
Stephanie and Greg Guyett
Michael and Diane Hora, St. Mel '61
Laughing Acres Family Foundation
Mr. and Mrs. Michael L. Keiser
Leonard Loventhal and Laura Glaser
Michael and Kay O'Halleran, St. Mel '68
The Pusinelli Family
Greg and Marie Pusinelli
John and Maxine Pusinelli

\$25,000 - \$49,999

Caroline and John Ballantine
Mr. Walter Carlson and Mrs. Debora de
Hoyos
Morgan Stanley Smith Barney
Global Impact Funding Trust, Inc.
Mr. Gary Elden and Mrs. Phyllis Mandler
Ms. Judith Joy
Mr. Nickolas J. Neubauer
Mr. Samuel C. Schuppe
Ted Hoyer Charitable Trust
Dona and Samuel Scott
Dona and Sam Scott Foundation

Mr. and Mrs. Harry J. Seigle
Seigle Family Foundation
Denise and Joe Seminetta
Mr. William C. Young

\$15,000 - \$24,999

Mrs. Linda Ray Arny
Dr. Marsha Landau and Mr. Gary
Landau
Mr. Todd S. Lippman
Jim and Kay Mabie
Dr. and Mrs. Harold Pelzer
Mike and Maureen Roberts
Catherine and David N.
Rothschild
Robert J. W. Ryan
Mr. Orrin R. Williams
Pershing Advisor Solutions,
LLC

\$10,000 - \$14,999

Mr. Paul J. Adams III
Mr. Richard M. Burridge, Sr.
Mr. and Mrs. Daniel L. Duffy
Mr. Harve A. Ferrill
Ferrill Family Foundation
Mr. and Mrs. James A. Grimm
Mr. Howard E. Jessen
Mr. John H. Klancnik
Becky and Lester Knight
Mr. and Mrs. Jim Mabie



GIFTS BY INDIVIDUALS

\$5,000 - \$9,999

Anonymous
Mr. Albert Braggs, St. Mel '69
Marietta Bratta-Garber, Providence '60
Ms. Jeanette M. Butala
Mr. and Mrs. Edward F. Culliton
Mrs. Jeffrey C. Doane
Cynthia and Norman Goldring
Mr. and Mrs. Martin Gross
Mr. and Mrs. Michael Jay
Mr. Greg S. Jenkins
Jewell Events Catering
Andrew and Sheree Johnson
Ms. Carol W. Keenan
Mrs. Kelley Kinsella
Mr. and Mrs. Dennis J. McDonnell
Mr. Scott A. McKeon
Dr. and Mrs. Percy C. Moss Jr.
Mr. Alfred G. Nichols
Mr. Andrew S. Rosenman
Dr. and Mrs. Anthony J. Salemi, St. Mel '67
Mr. Vincent A. Sergi
Ms. Janet Stevens

\$2,500 - \$4,999

Anonymous
Mr. and Mrs. Richard P. Bergeman
Mr. and Ms. Bill Dawson
Mr. and Mrs. William A. Domm
Mr. Frank Egan
Mr. James Fitzgerald
Mr. and Mrs. J. Jeffery Geldermann
Mr. and Mrs. David Habiger
Mr. Lewis Linn
Mr. Philip McKenna
Ms. Whitney Neighbors
Mr. Alan Orlowsky
Mr. Jim Plante
Mr. and Mrs. Rob Reilly
Mr. David Ricci
Mr. and Mrs. Marc Steinman

Mr. Drew Van Vooren
Mr. and Mrs. Charles D. Wolf

\$1,000-\$2,499

Anonymous (3)
Mr. John E. Abney, St. Mel '96
Mr. Alan J. Allphin
Mr. and Mrs. Brad Archibald
Simon and Virginia Aronson
Dr. James G. Basker
Ellen and George Benson
Mr. Albert Y. Bingham Jr.
Mr. and Mrs. Timothy Bondy
Mr. Brian Boornazian
Mr. and Mrs. Donald Brackey
Mr. and Mrs. Eric D. Brandfonbrener Ms.
Kimberlee J. Burt
Mr. and Mrs. John Burt
Mrs. Jacqueline Burtin
Mr. Frank Casey
Mr. E. Randall Clouser
James W. Compton
Mr. Raymond F. Connor
Mr. and Mrs. Matthew Cullen
Mr. and Mrs. Roger K. Deromedi Patricia
Phelan Danloe
Mr. John F. Egan
Mr. and Mrs. David Evelyn
Ms. Melissa Sage and Mr. Jamey Fadim
Mr. Thomas J. Fitzgerald
Ms. Hope Francis
Mr. Donald C. Gancer
Mr. Steve Grabek
John and Pat Grady
Mr. and Mrs. Michael J. Graft, St. Mel '50
James C. and Mary J. Griffin, St. Mel '85
Mr. John M. Hall
Mr. John Heneghan
Mr. and Mrs. W. Brian Hopf
Mr. and Mrs. Whitney & Joseph
Huffsmith Mr. and Mrs. C. Hadlai Hull Ms.
Patricia Hurley
Mr. Allan M. Kaplan

Mr. Gerald S. Kaufman
 Joseph and Sally Keenan
 Harold W. Knapheide III
 David and Lesly Koo
 Jim and Ann LaPalermo
 Mr. James D. MacLennan
 Mr. Peter E. Manis and Ms. Susan A. Richman
 Mr. and Mrs. George H. Maze
 Mr. John M. McCabe
 Chuck and Monica McQuaid
 Dr. Cassandra R. Minor '84
 Mr. and Mrs. Thomas F. Moran
 Ms. Christal Morgan
 Mr. and Mrs. Jake Morris
 Mr. William M. Nickey III
 Robert J. Horton and James C. Perry
 Mrs. Cindy Pritzker
 Steven L. Rhodes, Ph.D.
 Ms. Lynn-Anne Schow
 Mr. and Mrs. Gordon Segal
 Dr. and Mrs. Gerald & Judy Shay, St. Mel '60
 Mr. and Mrs. David Smith
 Ms. Emily Sobut
 Rev. and Mrs. Craig Swanson
 Ms. Dona-Lee Trotter
Trotter Family Foundation
 David and Jamie Wainwright
 Mr. and Mrs. Herbert S. Wander
 Mrs. Mary Webber
 Mr. and Mrs. Dave Wichmann
 Constance and Hugh Williams
 Mr. and Mrs. Paul S. Williams

\$500-\$999

Anonymous (2)
 Mr. Rich Adloff
 Mr. Alan J. Allphin
 Percy Angelo and Marvin Medintz
 Mr. Paul Archibald
 Mr. Edward C. Auxer and Ms. Sara Wing David
 J. and Beverly J. Baar
 Mr. and Mrs. Everett A. Bell
 Mr. Phillip Bellagamba



GIFTS BY INDIVIDUALS

Ms. Susanne L. Berner
Mr. Kevin Brogan
Ms. Pamyla Fountain Brown, St. Mel '91 Mr.
and Mrs. Michael Brady
Ms. DaToya J. Burtin-Cox '96
Mr. and Mrs. Raymond P. Buschmann
Marlene and Stanely Calderon
Mr. Andrew Callaci
Mary Jo Campbell
Mr. and Mrs. Carl E. Carlson
Mr. and Mrs. Thomas G. Carter
Ms. Sheila Chapman
Ms. Elsa Chessani-Chalen
Phillip and Helen Coleman
Mr. John H. Cooper
Charles R. Courtney
Mr. and Mrs. Robert E. Curley
Mr. Ryan Daliege
Mr. and Mrs. Robert O. Delaney
Mr. Thomas H. Dittmer
Mr. Emmanuel Ford '02
Mrs. Eileen L. Furey
Dr. Annie M. Garraway
Mr. and Mrs. George Gatto
Bill and Pam Grady
Ms. Paula T. Grasso
Wayne L. Haraldson, St. Mel '59
Mr. and Mrs. Wallace Hepkema
Mr. Dan Hintzen
Mr. and Mrs. John G. Iberle
The Kollak Family
Mr. Brian Koch
Mr. and Mrs. Bart J. Kocha
Mr. Tom Kirages
Mr. Martin S. Lindenberger and Ms. Arlene
M. Wallace
Ms. Sylvia Lewis
Mr. and Mrs. Jonathan Man
Ms. Ruby G. Martin
Mr. John McGovern
Mr. Michael McHugh
Mr. and Mrs. Robert D. Meyers
Mr. Robert S. Nelson

Mr. Mark Novak
James J. O'Connor, St. Mel '65
Mr. Jim Rojahn
Mr. William Rudolphsen
Ms. Mary Sabatino
Mr. Dennis Shay
Julie Jovan-Sheerin & Patrick Sheerin Jr.
Mr. and Mrs. Daniel Siegfried
Mr. and Mrs. Elwin D. Simpson
Mrs. Stacy A. Stephens
Mr. Jackie C. Tyler
Dr. and Mrs. Donald A. Van Beek Jr. Mrs.
Marci Van Gilder-Rubin
Ms. Christel D. Ward

\$250-\$499

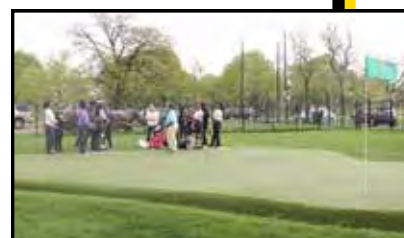
Anonymous (5)
Mr. Mark and Mrs. Allison Angeloni Mrs.
Tabitha Atkins
Ms. Mary Lou Backes
Mr. Henry W. Barkhausen
Mr. and Mrs. Thomas P. Bernardi
Mr. Jim Berringer
Ms. Mary Ann Berry
Ms. Joan L. Bieler
Mr. Paul Bowman
Mr. Daniel Brainard
Mrs. Molly Brogan
Mr. and Mrs. Robert K. Buerer
Mr. and Mrs. John E. Campbell
Mr. James P. Caputo
Mr. Jack Cavalenes
Ms. Claire Challenger
Don and Carol Ann Cisek
Mr. Frank J. Cullen
The Cullen Family
Mr. and Mrs. John B. D'Arcy
Ms. Elizabeth Daukus
Mr. and Mrs. Glenn P. Davis
Ms. Amy T. Dickinson
Ms. Kathryn M. Dillon
Mr. Goodwin W. Duncan

Jon and Rachel Barreto Edensword
 Mr. David English
 Rev. Timothy D. Ervin, '91
 Mr. and Mrs. Craig S. Espevik
 Dr. Adolphus C. Favors Jr., M.D.
 Mr. Pierre Frechette
 Joan Gerig and Orlando Redekopp
 Ms. Charlotte Guyett
 Mr. John Hansen
 Tricia Horne and Edmond Ford
 Mr. Joshua Hurd
 Mr. Andrew S. Jacobs
 Roy Jasinski and Noreen Dennehy Jasinski
 Mr. Constantine Jovan
 Mr. Howard J. Karloff
 Mr. Mike Kirchessenger
 Mr. Mark S. Litner
 Ms. Ana Martinez
 Mrs. Elizabeth M. McLean
 Mr. George M. Meier
 Ms. Jessica Miller
 Mr. Willie Miller
 Mr. and Mrs. Willie J. Minor
 Mr. and Mrs. Lester Munson
 Mr. Jerome P. O'Connor
 Ms. Tessa Payne
 Mr. Thomas Poepping
 Jill and Ron Rohde
 Arthur J. Schmitz
 Ms. Cindy A. Schwab
 Mr. Owens J. Shelby, St. Mel '00
 Ms. Colleen Smith
 Ms. Courtney Sorensen
 Adrienne Turner
 Ms. Kimber A. Turner '03
 Mr. Michael Vates

\$100-\$249

Anonymous (5)
 Ms. Julie Adler
 Ms. Linda Amin-Rasul
 Ms. Imani N. Amos

Mrs. Khristian G. Anderson, St. Mel '03
 Ms. Adwoa V. Antwi-Barfi, St. Mel '00
 Ms. Shirley Antwi-Barfi
 Mr. John Barry
 Mr. Greg Baumli
 Mary Bellmar and Peter Olson Kathryn
 (Alexa) and David Bernards Ms. Phyllis
 Birks
 Mrs. Ellen Bichsel
 Mr. Mervin J. Block
 Mr. and Mrs. Theodore J. Boswell Ms.
 Kathleen Bovy
 Mrs. Willie Mae Bowling
 Mr. Cliff Bregstone
 Ms. Karen Brennan
 Mr. John Brown
 Ms. Maria Brubaker
 Ms. Helen M. Callahan
 Mr. John J. Caulfield
 Jesse and Priscilla Adams Cleveland
 Ms. Kate Cooney
 Mr. Gregory Cosby
 Mr. William Crane
 Ms. Jennifer Darrow
 Ms. Patricia Daukus
 Dr. and Mrs. Robert Dirmish
 Mr. Farmer and Ms. Donohue
 Mr. James Dow
 Ms. Ellen Edwards
 Ms. Anne E. Egger
 Barry Jay Epstein
 Mr. Juan Espejo
 Ms. Marilyn Fall
 Ms. Laura Fallsgraff
 Ms. Adrienne Fama
 Mr. Elliot Farkas
 Mr. and Mrs. E. Marvin Farwell
 Ms. Rebecca Feig
 Rev. Donald J. Fenske
 Mr. and Mrs. John H. Fiore
 Audrey and Bob Fischer
 Ms. Molly Flaks
 Mr. and Mrs. James M. Florsheim Mr.
 and Mrs. Buvern J. Francisco Jr.



GIFTS BY INDIVIDUALS

Ms. Joan T. Gagen
Ms. Janet Gardner
Sabrina L. Gates
Mr. R. Brett Goad
Mr. David Goldberg
Mr. and Mrs. Lawrence E. Grisham
Mrs. Christine A. Hennig
Margaret Henning
Ms. Cherilyn Heramb
Dr. Walter S. Hofman
Mr. and Mrs. Michael Hurley
Mr. John A. Jackanicz
Mr. and Mrs. John A. Jackson
Mr. Jack Kanuk
Mr. and Mrs. Daniel Katz
Thomas and Patricia (Connelly) Kearney,
Providence '53
Ms. Jennifer Kelly
Mr. William Kirby
Mr. James Knight
Laura Kodres
Mr. and Mrs. Leo L. Komosa,
St. Mel '61
Ms. Marianne Kozlowski
Mr. Andrew Kross
Ms. Julie LeClerq
Mr. and Mrs. Thaddeus Lipinski
Ms. Karen Littig
Ms. Wen J. Liu
Mr. and Mrs. D. and Patterson Luckett
Ann Macur
Irene V. Maksym, Providence '60
Frances
K. Lee Matheu
Paul and Colleen Mazzetta
Mrs. Elizabeth Mazzocco
Patricia A. McAvinchey
Mr. and Mrs. Kevin McCanna
Mr. Doug McClure
Ms. Sarena McRae
Mr. Steve Merkin
Ms. Roberta Michaletz
Mr. Tommy Miller

Kendra L. Mills
Mr. William C. & Mrs. Carolyn E. Mitchell, Prov. '49
Mr. Andre L. Morgan
Mr. and Mrs. John Morris
Mr. Joseph Murphy
Mr. and Mrs. Vernon Nash
Doris J. Newton
Mr. and Mrs. John R. Olechny, St. Mel '65
Mr. Jason Olesnavage
Ms. Bettye J. Parque
Mr. Julio Paz
Mr. Owen Pelzer
Ms. Carolyn A. Powers
Mr. and Mrs. Raymond E. Powers
Dr. Olga Price
Mr. and Mrs. Everett O. Queckboerner
Ms. Emina Rebronja
Ms. Virginia Rose Reed, Providence '54
Mr. and Mrs. Herman E. L. Reid Jr.
George T. and Marcelline M. Ricker Jr.
Charles and Denise Romeo
Dr. Lawrence Ross
Mr. and Mrs. Harold Rubin
Mr. Cody Scheyer
Miss Lauren Shifflett
Mr. and Mrs. Ralph A. Schuler
Ms. Nicole Schnitzler
Ms. Marilyn C. Sendorff
Helen E. Sieben
Ms. Elizabeth Silvia
Ms. Diane Sotiros
Paul and Diane Spanier
Dr. and Mrs. Carl Spight
Mr. and Mrs. Drew Steinbach
Julie and Bob Stracks
Eddie and Denise Swift
Mr. and Mrs. Edward H. Tamminga
Mary Thommen
Mr. and Mrs. Samme L. Thompson
Mr. Calvin C. Thurman Jr., St. Mel '72
Ms. Brooke Torrenga
Ms. Bridget Tully

Mr. Arthur Turner II
 Elizabeth A. Uihlein
 Angela and Allan Vagner
 Mr. and Mrs. Thomas Van Gilder
 Mr. Richard B. Vanecko and Mrs. Barbara H. Vanecko
 Mr. Edward Verderame
 Mr. and Mrs. Albert F. Wagner
 Mr. John Walz
 Larry and Charlene Warrior
 Mrs. Claudia Waterloo Tornquist
 Mr. and Mrs. Leonard S. Wicklund
 Ms. Kerry-Ann Wilkins
 Ms. Angela Williams
 Miss Jo Anne Willis
 Carl and Joyce Winger
 Mr. Simon Winter
 Mr. Andre Woodson Sr.

Up to \$99

Anonymous (8)
 Mr. and Mrs. William J. Adamski
 Mr. and Mrs. Davis J. Alston
 Mrs. Roberta F. Arenz-Kaminski
 Ms. Stacey Atkins
 Maureen Reynolds Avina, Providence '60
 Ms. Joan Bailey
 Mr. Charles M. Barber
 Mr. James L. Baskin
 Mr. and Mrs. Michael J. Bates
 Mr. Dirk A. Beadleston and Ms. Melanie B. Dylstra
 Ms. Barbara Bell
 Ms. Naomi J. Bell
 Ms. Carolyn Benedict
 Robert and Sandra Bennis, St. Mel '62
 Mr. and Mrs. Anthony Bowling
 Mr. Joseph R. Brabec
 Mr. David Broz
 Mr. Daniel Bump
 Ms. Laura Burns
 Ms. Mary Carr

Ms. Terese Caruso, Providence '60
 Ms. Colleen Caughlin
 Mr. Hal T. Chiodo
 Ms. Lori D. Crisler
 Ms. Marilyn R. Ciucci
 Ellen Hoye Cortopassi
 Ms. Ashley L. Cosby
 Dr. Bonita Cosby
 Dr. Yvette Coursey
 Ms. Emma Cox
 Mr. Erik Curran
 Mr. Paul Damian
 Mr. and Mrs. Daniel W. Danko Ms. Dominique Davis '02
 Mr. Eric Dean
 Mr. and Mrs. John Deppong Jr.
 Mrs. Alice DeSilvia
 Mrs. Katrina Devinner
 Allan Devitt & Susan Z. Diamond
 Mr. and Mrs. Richard Doub
 Ms. Elizabeth Egan
 Ms. Joan E. Enderle
 Ms. Melissa Famularo
 Mr. R.C. Feuerbacher
 Mr. and Mrs. John R. Fischer
 Mr. Kenneth P. Fivizzani
 Mrs. Gloria Flanzer
 Ms. LaWanda Flennoy
 Mr. and Mrs. K. Sean Frey
 Mr. Drew Gibbons
 Ms. Nancy M. Gordon
 Ms. Elizabeth Green-Brunner Sister
 Jeanne L. Hagelskamp
 Mr. Peter Harsy
 Laurencella Hakwins
 Mr. and Mrs. Thomas J. Hayes Mr. Martin Heck
 Ms. Patricia Hesch
 Mr. and Mrs. Robert Holman
 Ms. Kathie House
 Mr. and Mrs. Thomas Houser
 Edward and Patricia Jablonski



GIFTS BY INDIVIDUALS

Ms. Patricia Jackowiak
Mr. Henryk Jedrzejek
Miss Loren Jordan
Ms. Rosemary Kinney
Dr. Geraldine Komosa Piorkowski Joe and
Becky Kornick
Ms. Parreshea Laws
Scott Lee
Ms. Nancy Lennon and
Mrs. John F. McNellis
Mr. Clayton Lenoir
Mr. and Mrs. Bob Lessman
Mr. and Mrs. Roger A. Libke
Ms. Jeanette Litz
Ms. Gertrude O. Lloyd
Mr. Raymond Lombardi
Ms. Sandra Lukic
Ms. Corinne M. Lyon
Mrs. Edward Lyons
Father Patrick M. Lyons
Ms. Melissa Beaty
Donald C. and Audria B. Marek
Mr. Robert Marovich
Ms. Mary B. Marshall
Ms. Eve Mayer
Mr. William R. Pepper and
Mrs. Teresa E. McDonald-Pepper
Mary J. McEney
Ms. Robyn McGee
Mr. Tucker McKennan
Mr. and Mrs. Frederick McKinney
Ms. Lynnette McRae '02
Jane and Sam L. Miller, St. Mel '44
Ms. Verletta I. Moody
Mr. Connor O'Halleran
Mr. and Mrs. Edward J. Oken
Kateri O'Shea and Mary Stretch
Ms. Dolores Ostrowski
Mr. Neil P. Pagano
Ms. LaKeisha C. Palmer

Dan and Mary Ann Pankiewicz
Mr. Anthony Perrin
Mr. Ernest Pettis '73
Ms. Patricia A. Pruitt
Mr. and Mrs. Bill Reider
Mr. and Mrs. Finley Roppolo, Providence '51
Mr. Chris and Mrs. Judy Rokous
Mr. and Mrs. Lawrence P. Rowells
Ms. Mary T. Saigh
Mrs. Milton Scheffler
Ms. Mary Schmuttenmaer
Mr. and Mrs. Robert Schultze
Mr. and Mrs. Donnie L. Shaw Jr.
Mr. Laird K. Smith
Ron and Julie Stepp
Mr. and Mrs. James Strawn
Dr. Michelle L. Streety
Dr. and Mrs. Edward Tenner
Mr. Jack L. Thorson
Mr. and Mrs. Alexander T. Topping
Mr. Matthew Tully
Mr. and Mrs. Albert W. Turner
Mr. John F. Twomey, Jr.
Mr. and Mrs. Whitney Valentine
Mr. Harmon P. Vaughter
Mr. Bruce Walter
Mr. Josh Wheatley
Mr. and Mrs. J. Carroll Williams
Ms. Regina N. Williams
Aleatha Wilson '87
Bonita and Tom Wise
Jerry and Mary Pat Zacker
Mr. Sanford E. Zimmerman and
Ms. Colleen Caughlin Mr. and Mrs. Richard J. Zott



GIFTS BY ORGANIZATIONS



Thank you to all of the organizations who believe in the mission of Providence St. Mel School!

Gift Period:

July 1, 2017—June 30, 2018

**A TRIBUTE TO OUR TEACHERS
2018 Annual Report**

“The teachers have made a strong impact on my work ethic.”

- Kendall A., Class of 2018



\$100,000+

The Jay Pritzker Foundation
Johnson Scholarship Foundation
Renee and Edward Ross
Foundation

\$35,000 - \$99,999

Anonymous
Aon Foundation
Dream Makerz Foundation
The Fred Maytag Family Foundation

\$15,000 - \$34,999

Anonymous
Aldridge Family Foundation
Chubb
J. W. Bagley Foundation
BMO Harris Bank N.A.
Helen Brach Foundation
Fred J. Brunner Foundation
The Canning Foundation
Fifth Third Bank
The Andrew and Alice Fischer
Charitable Trust
Keith Davis Scholarship Fund
Liberty Mutual Group, Inc.
Oscar & Elsa Mayer Family
Foundation
Plastipak Packaging, Inc.
Ritzenthaler Family Foundation
Ronald H. Ringer Foundation
Sage Foundation
Dr. Scholl Foundation
Gertrude E. Skelly Charitable
Foundation
The QBE Foundation
Wiedner & McAuliffe, Ltd.

\$10,000 - \$14,999

Abbott Laboratories Fund
Anonymous
Arch Re
Bruce Foundation
Celebrate Life Foundation
The Clare Foundation
CNA Insurance
ISMIE Mutual Insurance Company
Kovler Family Foundation

Lavin Family Foundation
Jack Miller Family Foundation
Jewell Events Catering
Elinor & Maynard Marks Family Fund
Motorola Solutions Foundation
Henry E. Niles Foundation
The Northern Trust Company
Pat and Shirley Ryan Foundation
Sullivan & Cromwell, LLP
Tully Family Foundation
The Turner Construction Company
Foundation
Wakerly Family Foundation
William Blair and Company, L.L.C.
Zurich American Insurance Company

\$5,000 - \$9,999

American International Group
Aspen Re
Bernau Family Foundation
The Charles W. & Patricia S. Bidwill
Charitable Foundation
Charles H. and Bertha L.
Boothroyd Foundation
CBOT Foundation
The Coleman Foundation
A.G. Cox Charity Trust
Stannard and Dorothy Dunn
Charitable Trust
Theodore Eckert Foundation
Federated Group, Inc.
First Bank of Highland Park
The Walter E. Heller Foundation
George P. Johnson
The Kathleen Morrison Foundation
Odyssey Re
Segal Family Foundation
W. W. Grainger, Inc.
Wells Fargo

\$2,500 - \$4,999

CBRE, Inc.
CIBC Bank
Euclid Insurance Services, Inc.
Goldman Sachs
Kinder Morgan Foundation
Gerald Norton Foundation
ManchesterStory Fund

Oxford Bank & Trust
Special People in Need

\$1,000 - \$2,499

Adreani Family Foundation
Allianz Global Risks US Insurance
Company
Anesi, Ozmon, Rodin, Novak &
Kohen, LTD
Margaret S. and Philip D. Block Jr. Family
Foundation
Clune Construction Company
Fitzsimmons Surgical Supply
Vanguard Charitable Endowment
Program
Ronald & Geri Yonover Foundation

\$500 - \$999

Attorneys Title Guaranty Fund
AYCO Charitable Foundation
Joffrey Ballet
Good Heart Work Smart
Foundation
United Way of Metropolitan
Chicago
Samuel Weinstein Family
Foundation

\$250 - \$499

Alliance Bernstein
First Midwest Bancorp
Horizon Screen Printing
New Galilee M.B. Church
Prior Family Charitable Trust

\$100 - \$249

Premier Project Management Inc.
Shell Oil Company Foundation
Umoja Mentoring and Educational
Basketball Camp

Up to \$99

Ameriprise Finance
The Community Foundation of Greater
Greensboro
Amazon Smile
The Kula Foundation
The Lisa Nemeroff Foundation
PEO Sisterhood
Pfizer Foundation

BOARD OF TRUSTEES 2017 - 2018



**Thank you to our
Board of Trustees who
work so diligently
behind the scenes!**

**A TRIBUTE TO OUR TEACHERS
2018 Annual Report**

***“College will be
difficult, but I know
I am prepared.”***

- Crystal L., Class of 2018



Paul J. Adams III

Providence St. Mel School

Caroline Ballantine

Mary Jo Basler

Dick Burridge

RMB Capital Management

Kimberlee Burt

A Child's Space

Jeanette Butala

Providence St. Mel School

John Canning

Madison Dearborn Partners

Debora de Hoyos

Mayer Brown, LLP

Thomas H. Dittmer

Marcia E. Doane

Gary Elden

Grippo & Elden

Harve A. Ferrill

Tom Fitzgerald

Aon Risk Solutions

Greg Guyett

East West Bank

Michael Hora, Sr.

J. Thomas Hurvis

Old World Industries

Greg Jenkins

Jewell Events Catering

Oscar D. Johnson, Jr.

BMO Harris Bank

Sylvia Jones

Judith Joy

Yes With Joy!

Kelley Kinsella

Chubb

Ben Kovler

Kovler Family Foundation

Todd Lippman

CBRE, Inc.

Scott McKeon

Michael D. O'Halleran

J. David Pepper

Pepper Construction

Karen Pritzker

The Jay Pritzker Foundation

Gregory Pusinelli

William Blair & Company

Michael Roberts

Andy Rosenman

Mayer Brown, LLP

Robert Ryan

Interactive Metronome

Sam Schuppe

Denise M. Seminetta

Premier Asset Management,

LLC

David Steinberg

Copy-Mor Inc.

James W. Stevenson, Jr.

Wiedner & McAuliffe, Ltd.

Robert A. Sullivan

Fifth Third Bancorp

THANK YOU FOR YOUR SUPPORT!

WE ARE GRATEFUL FOR YOU!

A TRIBUTE TO OUR TEACHERS
2018 Annual Report

***Your generous donations
provide effective
instruction and
exceptional enrichment
programs that
challenge our students
to strive toward their
greatest potential.***



Please help us to transform lives and to break down educational barriers and inequities in one of Chicago's most under-resourced communities. Together we can dismantle the persistent echoes of systemic racism through a quality education that guarantees access and opportunity.

This year we celebrated the commitment and resilience of our teachers, who continue to pave pathways for generations of students. With an average tenure of fifteen years, the teachers of Providence St. Mel School are high quality professionals truly committed to their students and our mission to provide a premier college-preparatory education that empowers students to go to top colleges and universities with impressive scholarships. Inspired by their teachers to work hard, the Class of 2018 alone was rewarded with nearly \$6 million in college scholarships!

Our teachers recognize the potential of each and every Providence St. Mel student, continue to raise the bar academically through individualization, and serve as the support system that students need to realize they have what it takes to be college-bound. Year after year, our devoted faculty have proven that a Providence St. Mel education is the only way to overcome the rampant crime and lack of opportunities rooted in more than a century of oppression on Chicago's West Side. Although there is still much work to be done, the everyday perseverance, integrity, and brilliance of our students and educators show us that we cannot waver in the face of these challenges. With their diligence, every student we educate today will have a successful future tomorrow.

Providence St. Mel underwrites a majority of education costs so that students have access to an affordable world-class education. Only with the support of such caring partners as you can Providence St. Mel continue to keep tuition low, offer indispensable scholarships, and deliver effective classroom instruction and exceptional enrichment programs that ensure these students are challenged to strive toward their greatest potential.

Join our teachers in supporting the Providence St. Mel mission and be as generous as you can —



MAIL: Use the enclosed self-addressed envelope to mail your check made payable to Providence St. Mel School.



CLICK: Visit psmnow.com/support and click on **DONATE NOW** to submit your online contribution easily, conveniently, and securely. This paperless method saves postage and printing costs!



CALL: For more information on how you can support Providence St. Mel, call the Development Office at 773.722.7756.

Your gift can make a difference for one life. A matching gift can make a difference for another. Many corporations have a matching gift program and have chosen this method to support education. Check with your company to see whether it provides this option. Many companies will match dollar-for-dollar, effectively doubling the value of your gift!

Providence St. Mel also appreciates gifts of goods and services that directly support our programs and facilities.

All of us at Providence St. Mel thank you for your kind and generous support! You are undoubtedly making a positive impact in our West Side community.



PROVIDENCE ST. MEL

Office of Development

119 South Central Park Blvd.

Chicago, IL 60624

PRESORTED
NONPROFIT ORG
US POSTAGE PAID
PERMIT NO. 7658
CHICAGO, IL

MISSION STATEMENT

At Providence St. Mel, we believe.
We believe in the creation of inspired lives
produced by the miracle of hard work.

We are not frightened by the challenges of reality,
but believe that we can change our conception
of this world and our place within it.
So we **WORK, PLAN, BUILD, and DREAM** – in that order.

We believe that one must earn the right to dream.

Our talent, discipline, and integrity will be our contribution
to a new world, because we believe we can take this
place, this time and this people, and make a better place, a
better time, and a better people.

With God's help, we will either find a way or make one.



www.psmnow.com